

Maple View Lodge Redevelopment Licensed Child Care

Shannon Brown, Manager
Children's Services Department
Community and Social Services
April 20, 2026

Project Overview

Renovation of Municipal Property → Licensed Child Care Centre

- Conversion of a portion of Maple View Lodge into a licensed child care facility.
- Design prioritizes:
 - Accessibility and inclusion.
 - Health, safety, and child development.
 - Compliance with all provincial legislation and standards.

Final design subject to approval by the Ministry of Education

Legislative Framework (Ontario)

Primary Governing Legislation

- Child Care and Early Years Act, 2014 (CCEYA)
 - Establishes licensing, safety, staffing, and program requirements.
- Ontario Regulation 137/15 (under CCEYA)
 - Defines space, equipment, staffing, and accommodation requirements.
 - Includes provisions for children with special needs and individualized supports.
- Licensing required through the Ministry of Education
 - All centres must meet provincial requirements before operation.

Accessibility Legislation (Ontario)

Core Accessibility Laws and Standards

- Accessibility for Ontarians with Disabilities Act, 2005
 - Requires identification, removal, and prevention of barriers.
 - Includes Integrated Accessibility Standards Regulation (IASR).
- Ontario Human Rights Code
 - Duty to accommodate to the point of undue hardship.
- Accessibility applies to:
 - Built environment.
 - Programs and services.
 - Communication and customer service.

Ontario Building Code (Accessibility Requirements)

Barrier-Free Design Requirements

- Ontario Building Code
 - Governs new construction and renovations.
- Key accessibility requirements:
 - Barrier-free entrance and path of travel throughout facility.
 - Accessible washrooms and fixtures.
 - Accessible play areas (indoor and outdoor).
 - Spatial requirements for activity and sleeping areas.
- Applies fully to renovations and change of use.

Design & Accessibility Requirements

Provincial design expectations

- Ontario Child Care Design Guidelines (2022)
 - Facilities must be barrier-free and inclusive.
- Requirements include:
 - Accessible entrances, circulation routes, and play areas.
 - At least one barrier-free washroom.
 - Inclusive environments for children of all abilities.
- Outdoor play space requirements
 - Minimum size and safe, enclosed design.

Federal Accessibility Standard

Accessibility Standards Canada (in development)

- Accessibility Standards Canada developing
 - First national accessibility standard for child care.
- Focus areas include:
 - Accessible built environments.
 - Inclusive design for children of all abilities.
- Represents a shift toward consistent Canada-wide expectations.

Ministry Approval & Compliance

Final plans will be reviewed and approved by the Ontario Ministry of Education.

- Approval ensures full compliance with CCEYA and regulations.
- Alignment with health, safety, and accessibility standards.

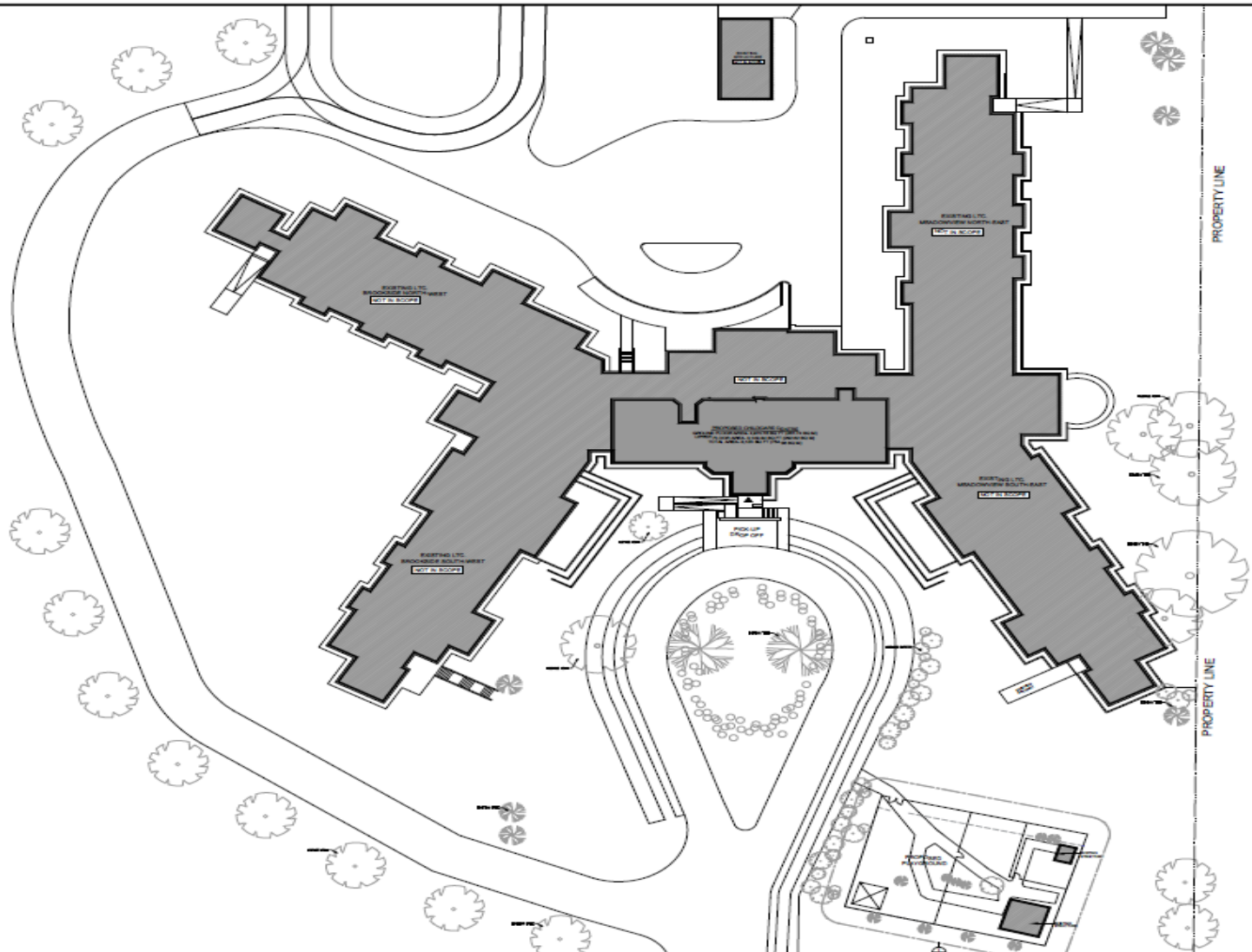
Stakeholder Engagement

Ongoing consultation with designated child care operator Kampus Kids who has 30+ years operating licensed child care in the community.

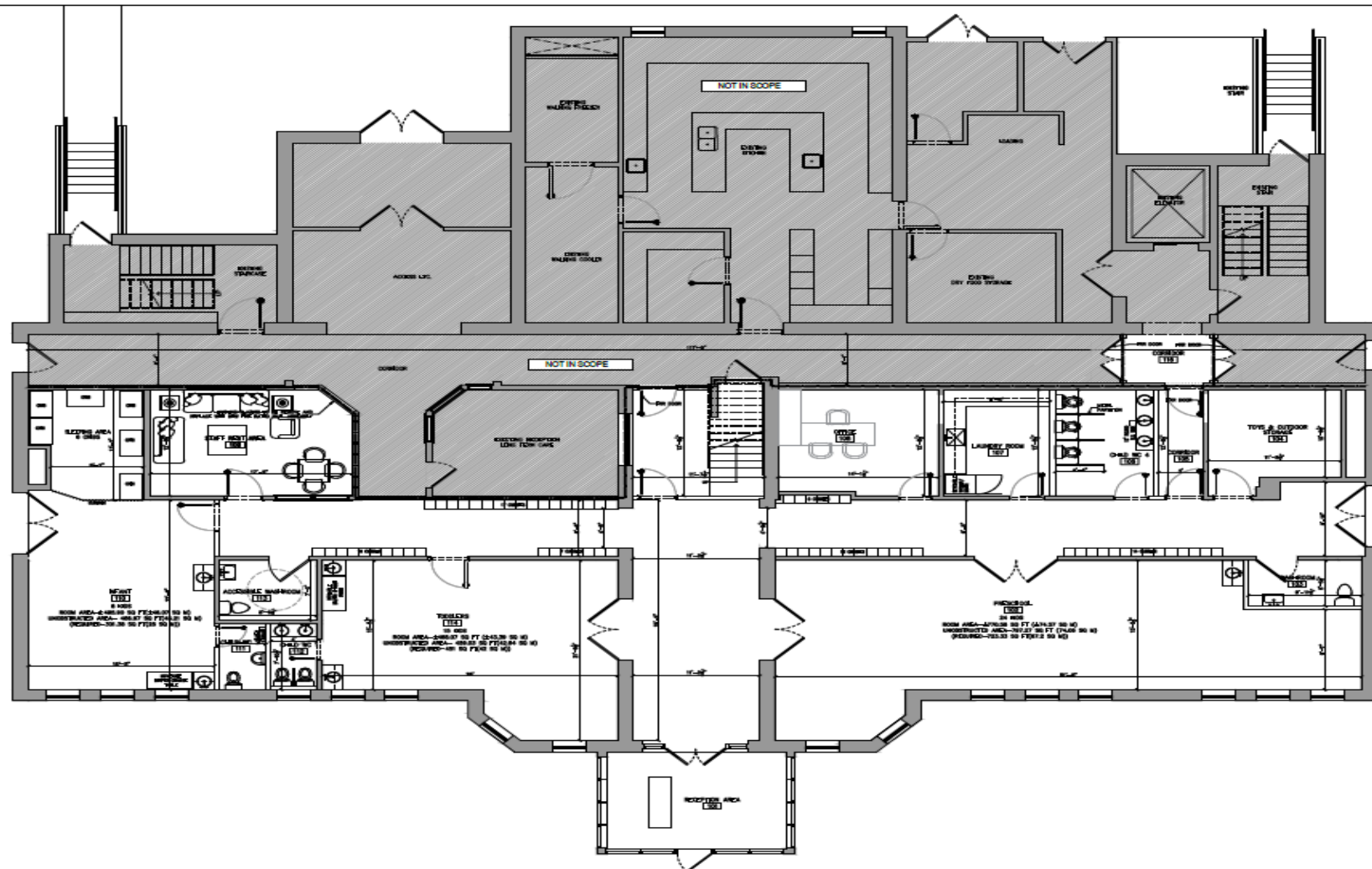
- Input informed;
- Functional layout;
- Accessibility considerations; and
- Program delivery needs.

Ensures design is practical, compliant, and responsive to real-world operations.

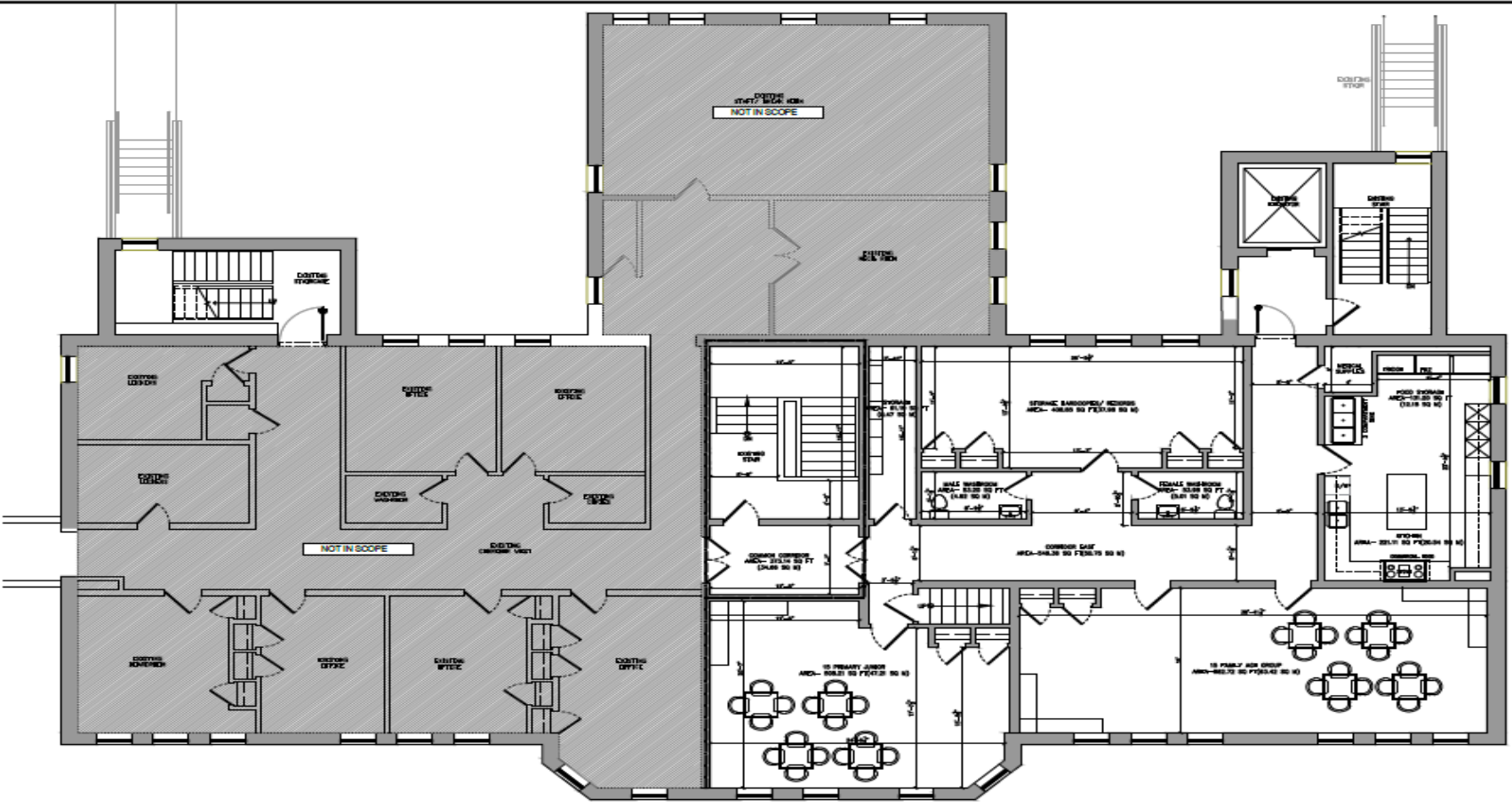
Site Plan at MVL



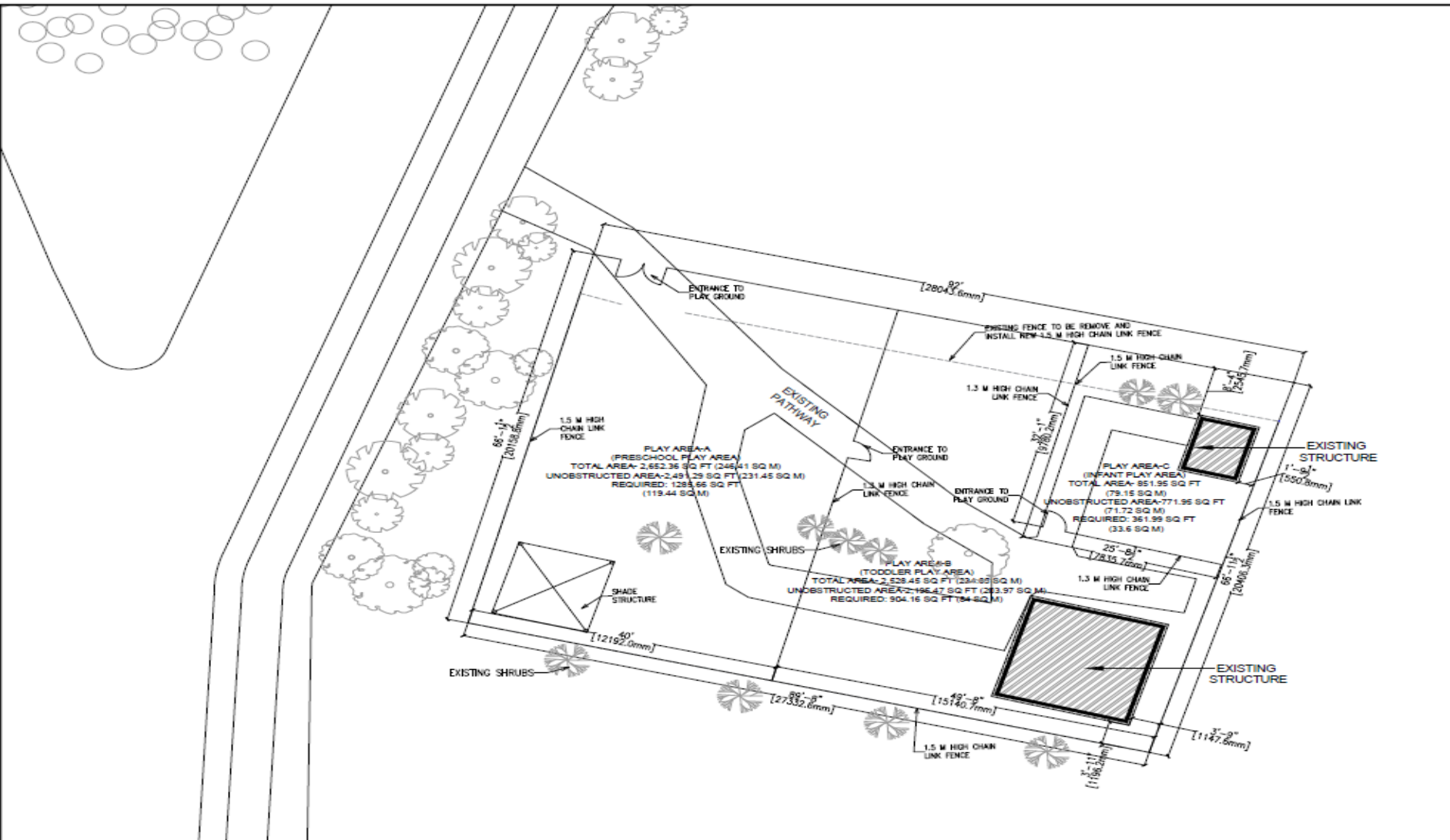
MVL – First Floor Design



MVL – Second Floor Design



Outdoor Playground



Key Takeaways

- Project aligns with:
 - Provincial legislation (CCEYA, Building Code, AODA).
 - Emerging federal accessibility standards.
- Accessibility is integrated through design, programming, and operations.
- Final outcome:
 - A fully licensed, inclusive, and accessible child care facility.
 - Supporting children, families, and the broader community.

Questions