

Comments on Proposed LEAR Mapping and Ag Review Towards a 'Made in Leeds & Grenville' Solution

Tom Graham

Bishop's Mills

July 9, 2025

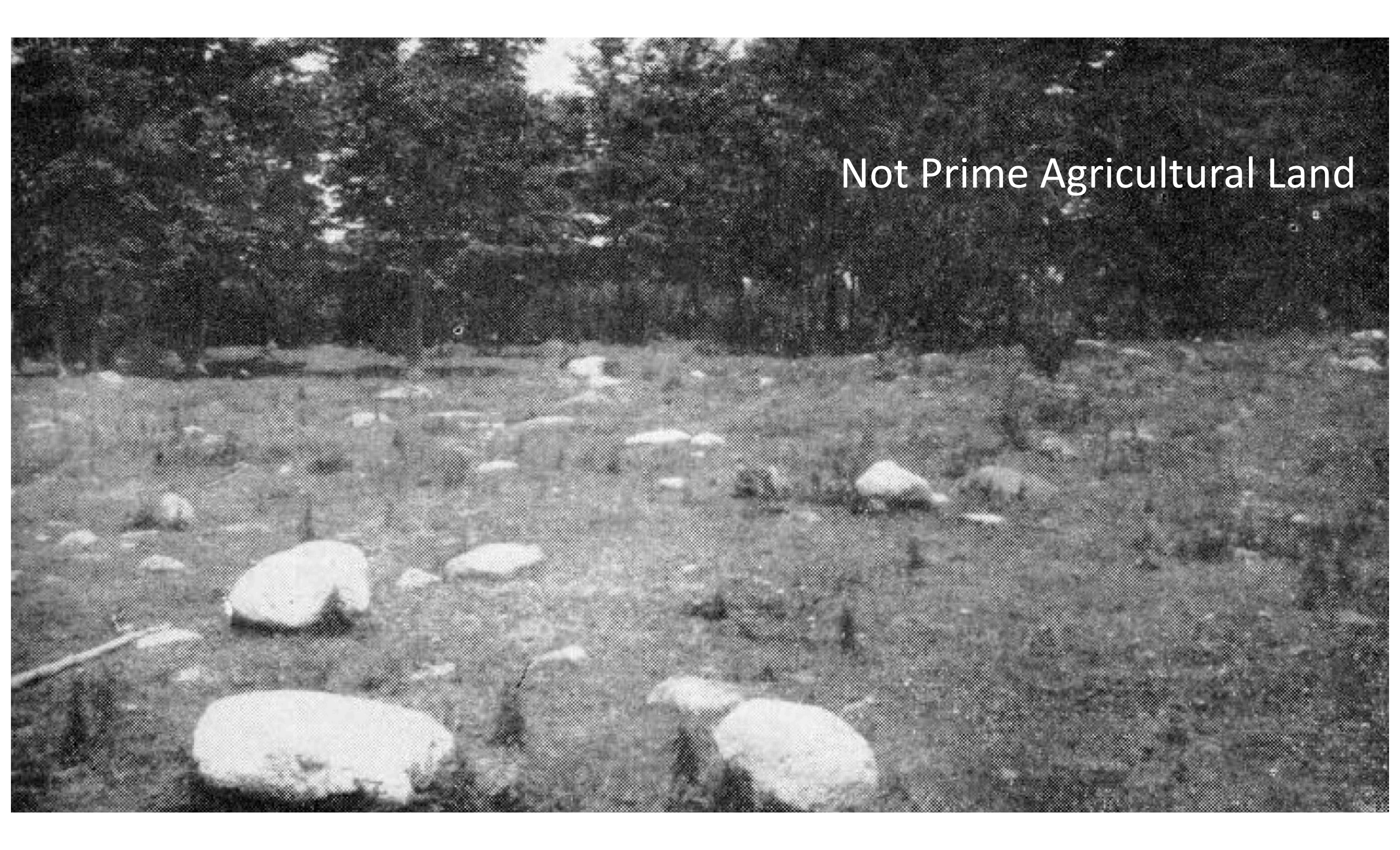


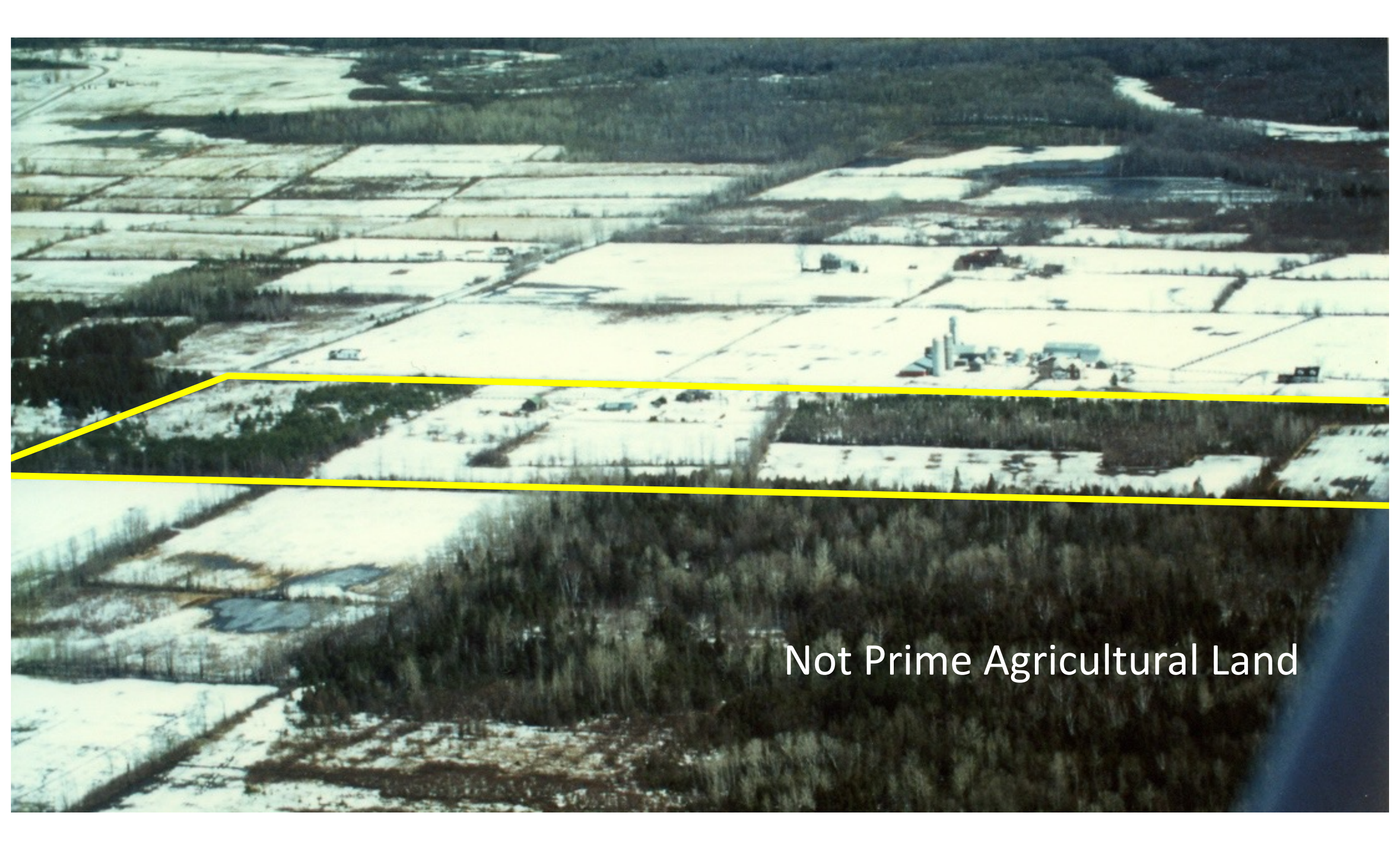
“2,275 residential units including townhouses, singles and apartments” going here.

Prime Agricultural Land



Not Prime Agricultural Land





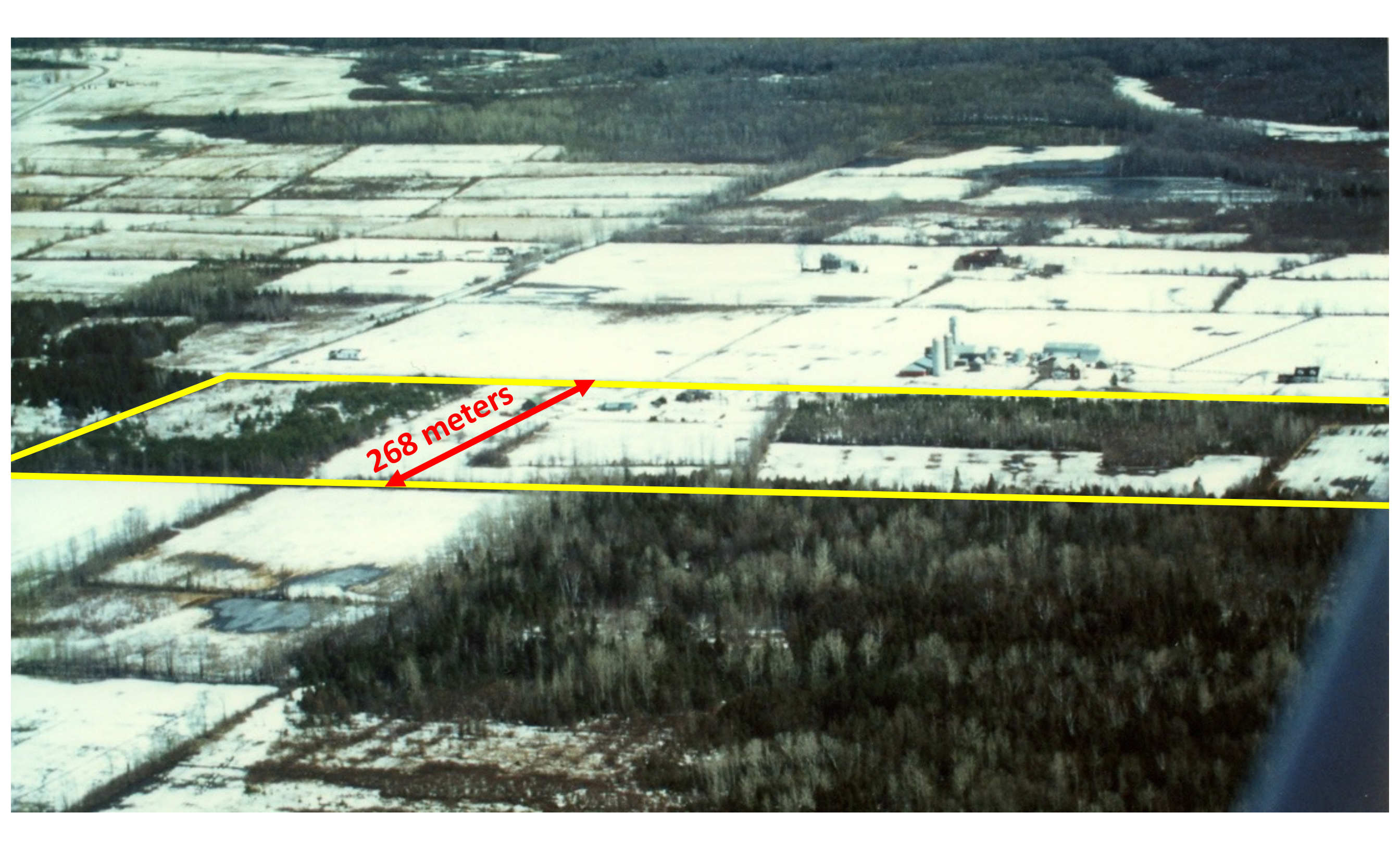
Not Prime Agricultural Land



04-12-2024 07:08 PM

5°C

SPYPOINT[®] FORCE-PRO



THANK YOU

Tom Graham, *Landowner*
Songwood Farm
Bishop's Mills, ON